



# DETURF

★ SPORTS COMPLEX ★



## VISITOR'S GUIDE

Tournaments@deturf.com 302-330-8873

[www.deturf.com](http://www.deturf.com)

DE Turf is a 501(c)3 Non-Profit Organization

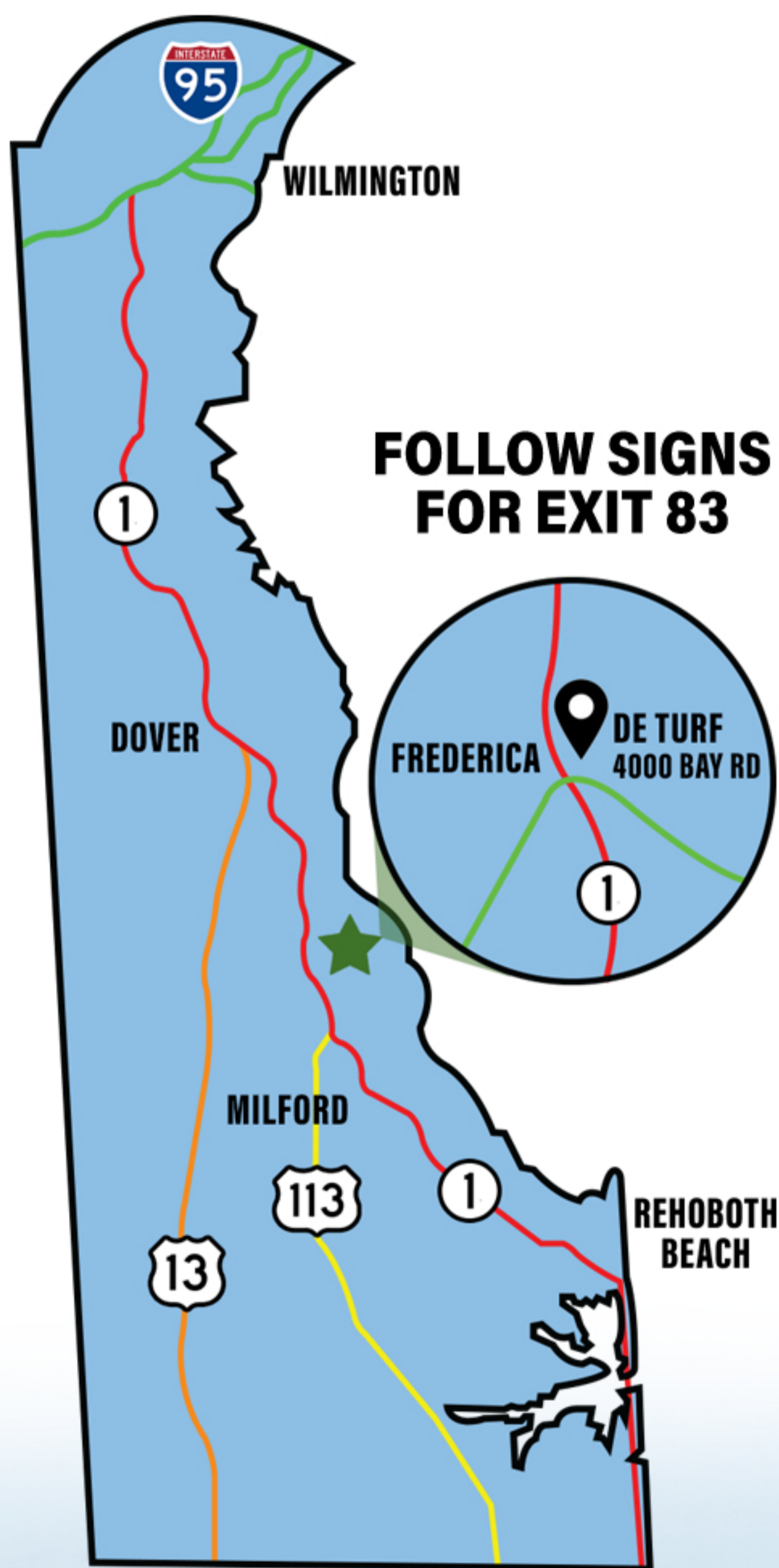


# DIRECTIONS TO DE TURF SPORTS COMPLEX

## 4000 BAY RD, FREDERICA, DELAWARE 19946

### Drivers from the North & West

DE Turf will be on the left. Use Exit 83, South Frederica. Turn left at the stop sign. Turn left at the overpass. Drive over the bridge. Take a right at the following intersection onto Milford Neck Road. The entrance to DE TURF will be on your left.



### From the North (PHL)

Take I-95 S toward Wilmington. Take exit 4A to merge onto DE-1 S for 54 miles.

### From the South (VA Beach)

Take 13 N through the Chesapeake Bay Bridge Tunnel. Stay on 13 N for 92 miles. Turn right onto US-113 N. Continue on US-113 N for 74 miles. Take the ramp onto DE-1 N/Bay Rd. Drive 5 miles on DE-1. DE Turf will be on your right. Take Exit 83. Follow signs into the DE TURF entrance.

### From the West (Wash DC)

Take US-50 E for 67 miles to MD-19 E. Follow MD-19 E for 30 miles to DE-1 S in Kent County from Cypress Street.





# FACILITY MAP

## LEGEND

- FIRST AID
- RESTROOM
- CONCESSIONS
- SIDEWALKS
- ENTRY GATE
- COACHES OFFICIALS VENDORS PARKING





# PARKING PAYMENT INFO

## PARKING IS \$15 PER DAY

Download:  **ParkMobile App**

**1**

**Enter Zone  
#46123  
into the App**

**2**

**Choose  
duration**

**3**

**Select  
“Start Parking”**

\*\*\* ADDITIONAL FEES WILL APPLY \*\*\*

**OR**

**Payment is Accepted at any of the Gate  
Entrances at the Tents (Cards only)**



**Single Day Pass: \$15 Credit/Debit on site**



**Multi-Day Passes:** Available depending on Event,  
but still \$15/day  
Example: Two Day Pass = \$30

### **RV PARKING: \$100 PER DAY**

- ▶ **Can be Paid Using Zone #46124  
or at Gate Entrances**
- ▶ **Must Park in Overflow Lot or  
Park & Ride Across the Street**



# FACILITY SERVICES



## Restrooms/Custodial Services

Restrooms are available and located at all concessions buildings as well as the main DE Turf office building.



## Coolers/Tents/Chairs

DE Turf DOES NOT provide coolers, tents, tables or chairs to events. Event, teams and players should bring their own.



**ParkMobile®**

## Parking

All participants are required to pay for parking. FAILURE TO PAY MAY RESULT IN VEHICLE TICKET, OR TOW.

DE Turf staff handles all parking logistics.

RV's must park in the Park and Ride located across the street from fields 11 and 12 or in our overflow lot.



# WHEN YOU'RE AT DE TURF, WE KEEP YOUR HEALTH IN CHECK

Bayhealth is central and southern Delaware's largest healthcare system. With multiple locations near DE Turf, we're here for you while you're in town.

**1 Bayhealth Emergency and Trauma Center, Smyrna**

(26 mi.) 401 N. Carter Road, Smyrna, DE 19977

Open 24 hours, 7 days a week

**2 Bayhealth Emergency and Trauma Center, Kent Campus**

(14.7 mi.) 640 S. State St., Dover, DE 19901

Open 24 hours, 7 days a week

**3 Bayhealth Emergency and Trauma Center, Sussex Campus**

(10.8 mi.) 100 Wellness Way, Milford, DE 19963

Open 24 hours, 7 days a week

**4 Bayhealth Walk-in Medical Care**

(6.6 mi.) 800 N. DuPont Blvd., Milford, DE 19963

M-F: 8 a.m. to 8 p.m., S-S: 9 a.m. to 5 p.m.

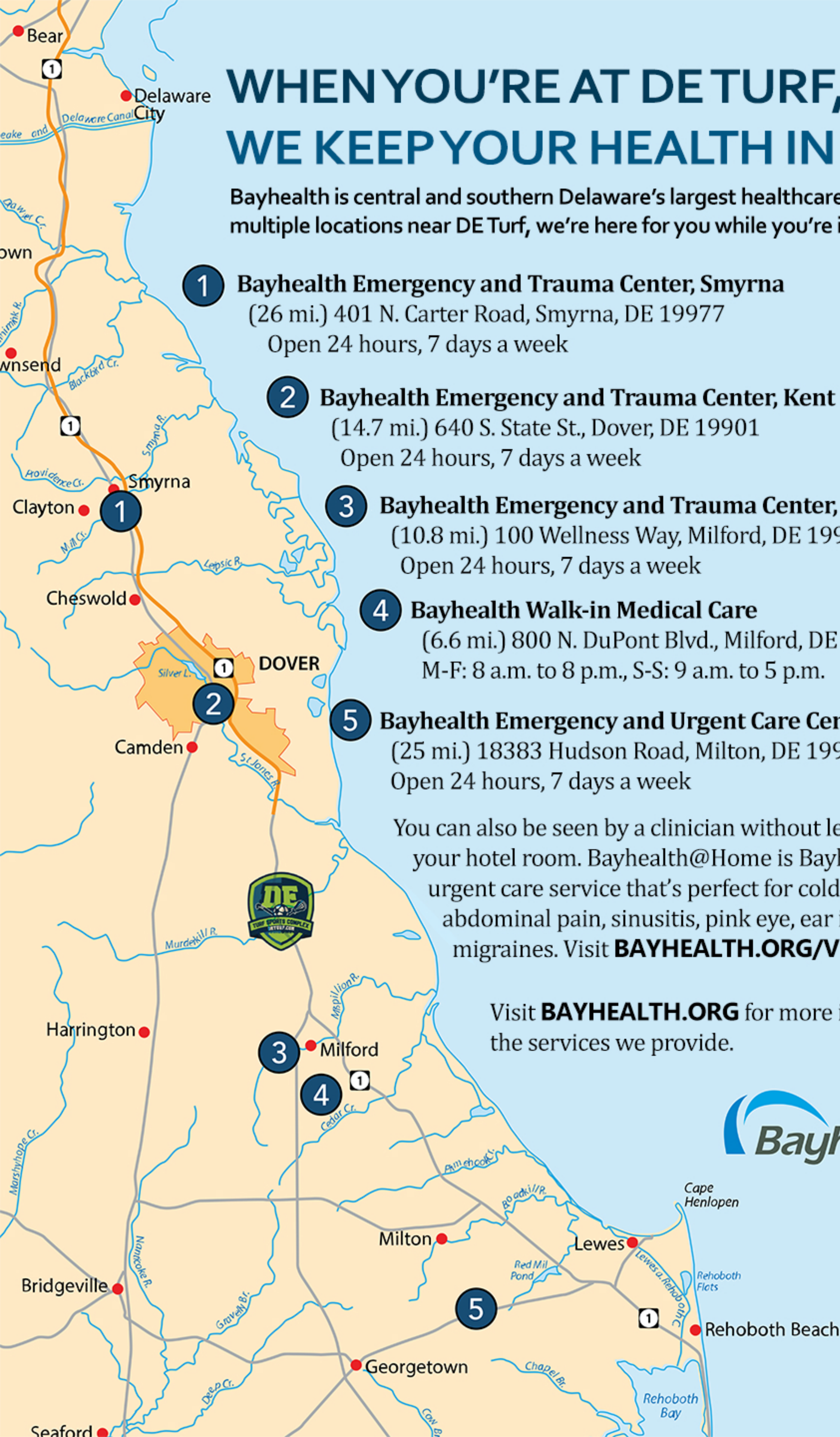
**5 Bayhealth Emergency and Urgent Care Center, Total Care**

(25 mi.) 18383 Hudson Road, Milton, DE 19968

Open 24 hours, 7 days a week

You can also be seen by a clinician without leaving DE Turf or your hotel room. Bayhealth@Home is Bayhealth's virtual urgent care service that's perfect for colds, flu, fever, rash, abdominal pain, sinusitis, pink eye, ear infection, and migraines. Visit **BAYHEALTH.ORG/VUC** to learn more.

Visit **BAYHEALTH.ORG** for more information on the services we provide.





# ADDITIONAL COMPLEX INFO

- ▶ **PLEASE NO PICK UPS OR DROP OFFS**  
Doing so causes a build up of traffic throughout the complex!
- ▶ **Dogs are allowed but MUST be on a leash and off of the Turf Fields**
- ▶ **Ice is sold at the complex under the overhang by the main office (behind Field 8) for \$4.50 – 20 lb. bag**
- ▶ **Tents/Canopies are permitted to provide team cover(USE WEIGHTS, NOT STAKES!)**
- ▶ **Restrooms & Concessions are on-site**
- ▶ **No large amounts of food or Drinks are permitted inside the complex. Absolutely NO team catering permitted inside the complex or parking lot.**
- ▶ **NO OVERNIGHT PARKING**





# OUR PARTNERS

**Tanger**  
REHOBOTH BEACH

BIG-NAME BRANDS YOU LOVE

Up to 70% OFF  
every day!



CLICK OR SCAN FOR SAVINGS  
Shop 3 Locations on Route 1  
[Tanger.com/Rehoboth](http://Tanger.com/Rehoboth)

